



U. S. Department of Agriculture
Dillon Ranger District
680 Blue River Parkway
Silverthorne, CO 80498
(970) 468-5400



SAINTS JOHN ROAD - FDR 275

Difficulty: MODERATE TO MORE DIFFICULT

Trail Use: Moderate

Length: 2.9 miles (one-way to the Wild Irishman Mine)

Elevation: Starts at 10,301 feet and ends at 11,717 feet (highest point 11,731 feet)

Elevation Gain: +968 feet - 11 feet = +957 feet

Open In Summer To: **HIKING, HORSE, MTN. BIKING, e-BIKES, 4X4, OHV, MOTORCYCLE**

Open In Winter To: **X-C SKIING, SNOWSHOEING, SNOWMOBILING**

Access:

- From I-70 take Exit 205, Silverthorne / Dillon, and travel east on HWY 6 toward Keystone.
- Just past Keystone, turn right onto Montezuma Road (County Road 5).
- Follow Montezuma Road for 7 miles to the town of Montezuma. The Saints John Road is in the middle of town on your right.
- Winter access to Saints John Rd is very limited due to restricted trailer parking on Town of Montezuma roads.
- **Seasonal Closure:** Saints John Road is closed to motor vehicles (except snowmobiles) Nov. 23 thru May 20 or until road is dry.

Trail Highlights:

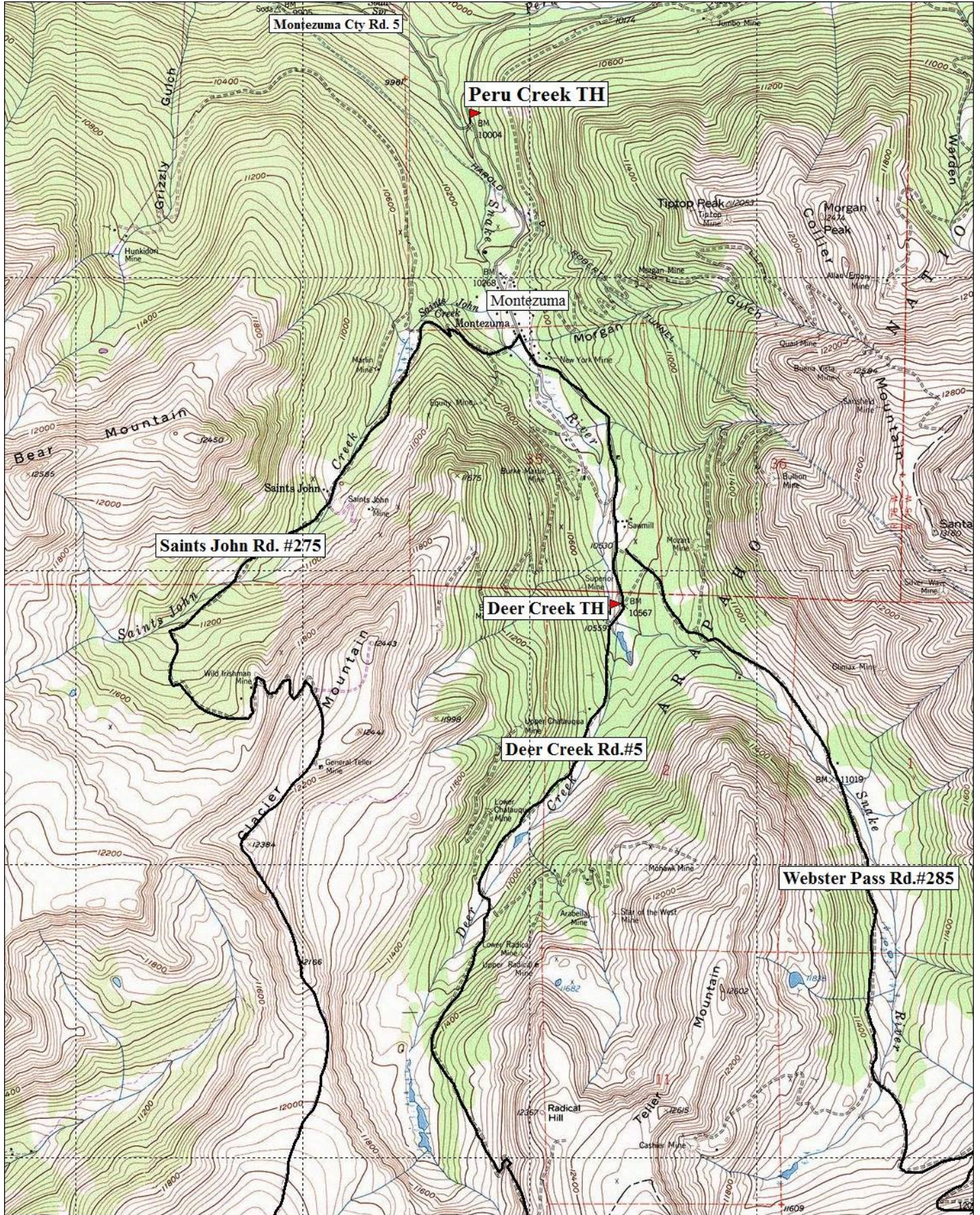
- Follow the Saints John Road from Montezuma toward the old mining town of Saints John for approximately .5 miles to the intersection with the Hunkidori Mine Road (FDR 276). Bear to the left and continue toward Saints John.
- From Saints John the road continues 1.6 miles on to the Wild Irishman Mine and another .8 miles to the General Teller Mine.
- The Saints John Mine was the first silver strike in Colorado (1863). This glacial valley boasted a mining camp, library, mill, smelter and sawmill, but no saloons. Saints John was named after St. John the Baptist and St. John the Evangelist.
- The end of the road has spectacular views of Grays and Torreys Peaks to the northeast.

Important Information:

- Off-highway vehicles must be registered with Colorado State Parks. Out-of-state residents who bring OHVs into Colorado must purchase a Colorado Non-Resident OHV permit.
- The trail intersects potentially dangerous avalanche paths, especially above Saints John.
- **Snowmobiling is only allowed on Saints John Road; any off road use is prohibited.**
- Horses are not recommended on this road due to high motorized use.
- The buildings at Saints John are privately owned. Please respect these and other private structures.

*THE INFORMATION CONTAINED HEREIN IS INTENDED TO BE A GENERAL GUIDE ONLY, **NOT** FOR NAVIGATIONAL PURPOSES..*

SAINTS JOHN ROAD#275



TN MN
9 1/2°