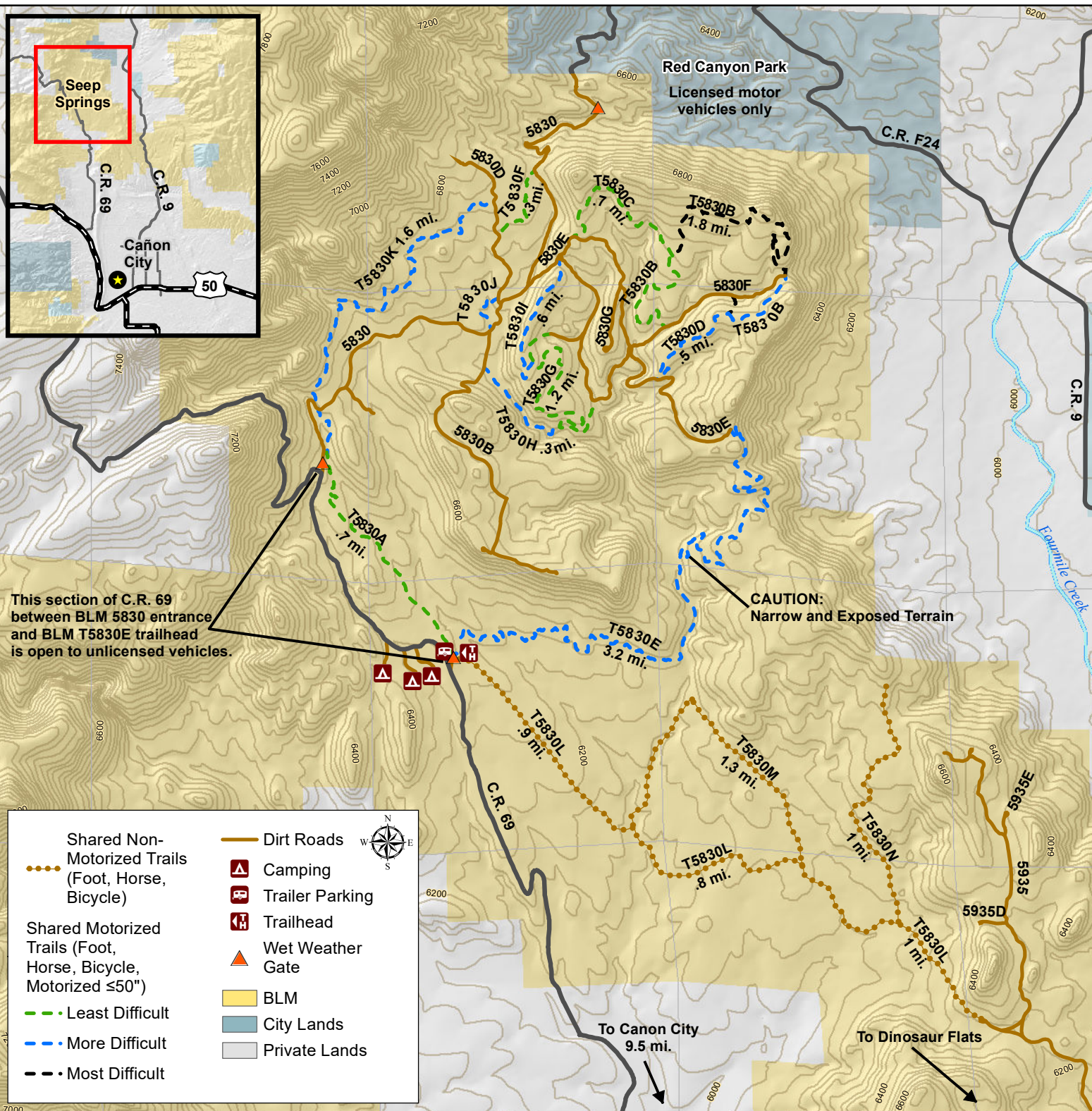
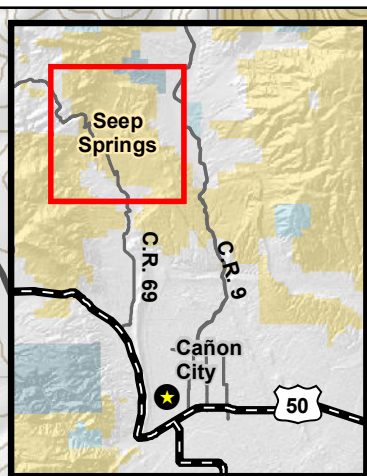




Seep Springs

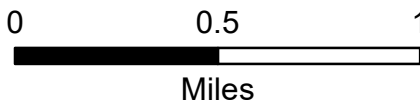


This section of C.R. 69 between BLM 5830 entrance and BLM T5830E trailhead is open to unlicensed vehicles.

CAUTION: Narrow and Exposed Terrain

Shared Non-Motorized Trails (Foot, Horse, Bicycle)	Dirt Roads	Camping
Shared Motorized Trails (Foot, Horse, Bicycle, Motorized ≤50")	Trailer Parking	Trailhead
Least Difficult	Wet Weather Gate	BLM
More Difficult	City Lands	Private Lands
Most Difficult		

No warranty is made by the Bureau of Land Management as to the accuracy, reliability, or completeness of these data for individual use or aggregate use with other data, or for the purposes not intended by the BLM. Spatial information may not meet National Map Accuracy Standards. This information may be updated without notification. Current as of 3/24/2021



Travel Limited to Designated Methods

